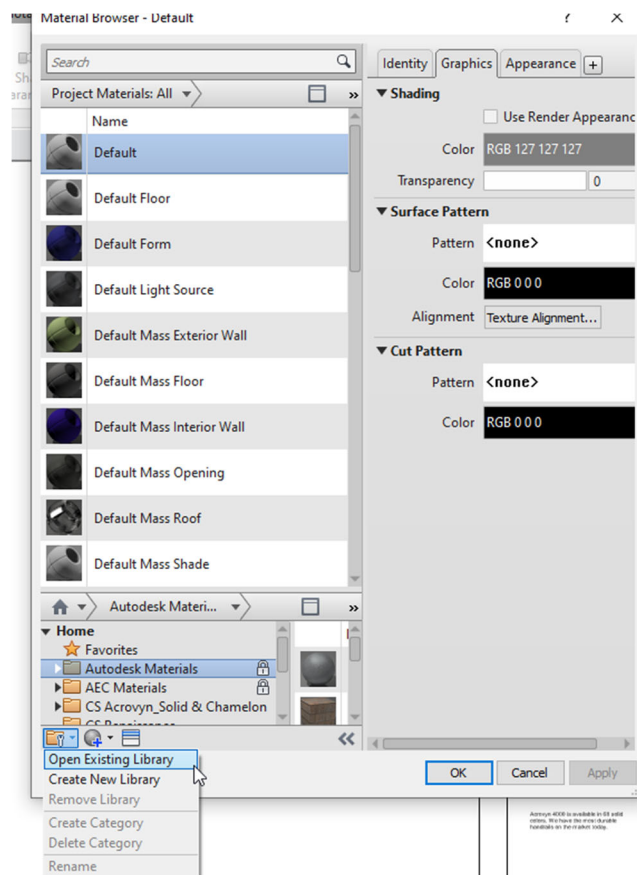
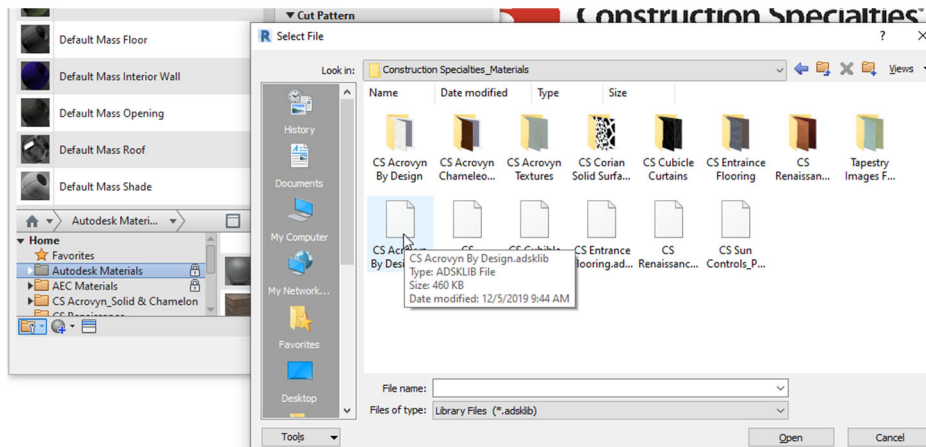


Download Material Library for product line needed from C-Sgroup.com

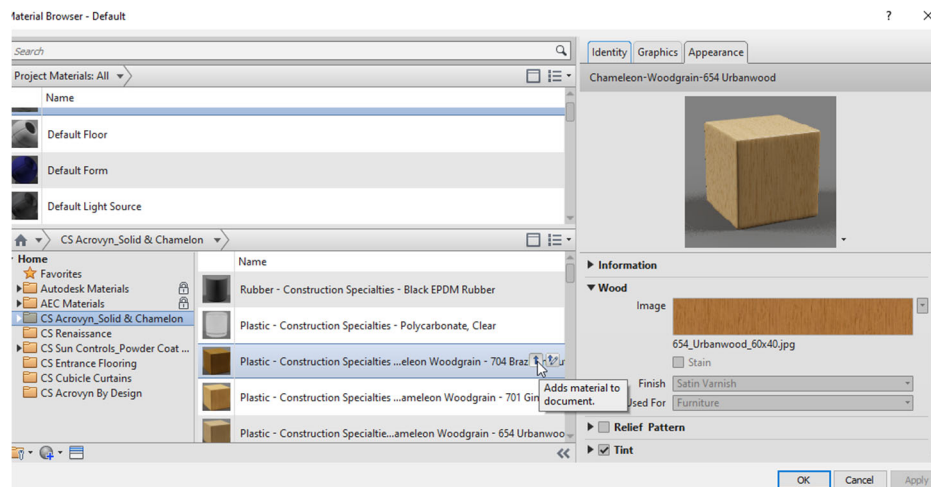
Name	Date modified	Type	Size
CS Acrovyn By Design	12/6/2019 8:40 AM	File folder	
CS Acrovyn Chameleon Woodgrains	12/5/2019 9:42 AM	File folder	
CS Acrovyn Textures	11/25/2019 5:19 PM	File folder	
CS Corian Solid Surface Color Palette	11/25/2019 5:19 PM	File folder	
CS Cubicle Curtains	11/25/2019 5:19 PM	File folder	
CS Entrance Flooring	11/25/2019 5:19 PM	File folder	
CS Renaissance Real Wood	11/25/2019 5:19 PM	File folder	
Tapestry Images Full sheet	12/4/2019 10:31 AM	File folder	
CS Acrovyn By Design.adsklib	12/5/2019 9:44 AM	ADSKLIB File	461 KB
CS Acrovyn_Solid & Chamelon .adsklib	12/5/2019 4:25 PM	ADSKLIB File	5,005 KB
CS Cubicle Curtains.adsklib	12/5/2019 11:02 AM	ADSKLIB File	2,228 KB
CS Entrance Flooring.adsklib	12/5/2019 10:25 AM	ADSKLIB File	2,189 KB
CS Renaissance.adsklib	12/5/2019 9:39 AM	ADSKLIB File	679 KB
CS Sun Controls_Powder Coat and Coria...	12/4/2019 3:32 PM	ADSKLIB File	1,769 KB

Within your Revit project file go to Manage Materials. See image below select the file with wrench image and select Open existing library. Locate the .adsklib on your computer where you saved after downloading.





Once the library is loaded. Materials will populate. Click arrow and add material to project.



Once in project you will have to link some images to the material for accurate material. Material images are in the zipped folders within the original download. Click image file name and located file. Then apply material to model as needed.

